

User guide to changing
smtp relay server details
for Mozilla Thunderbird

A guide to changing the smtp relay server details - for Mozilla Thunderbird

This document provides guidance on how to change the smtp relay server details for the Mozilla Thunderbird email client.

Simple Mail Transfer Protocol (smtp) is an internet standard for sending / relaying emails across IP networks.

Gamma Telecom has introduced a new smtp relay server for your customer's outgoing email so your customer's smtp relay settings will need to be changed within their email client.

The new smtp server details are: smtprelay.business-access.co.uk

You should change your customer's smtp relay details in their email client as soon as possible and certainly **before 20th June 2011** to ensure your customer can continue to have an outgoing email service.

NOTE:

For Gamma controlled domains (i.e. smtp.gammadsl.com and smtp.uniworlddsl.com) there is NO work to do as Gamma has already re-pointed the traffic to the new smtp relay servers.

For non-Gamma controlled domains, the smtp relay server details will need to be made.

These changes are:

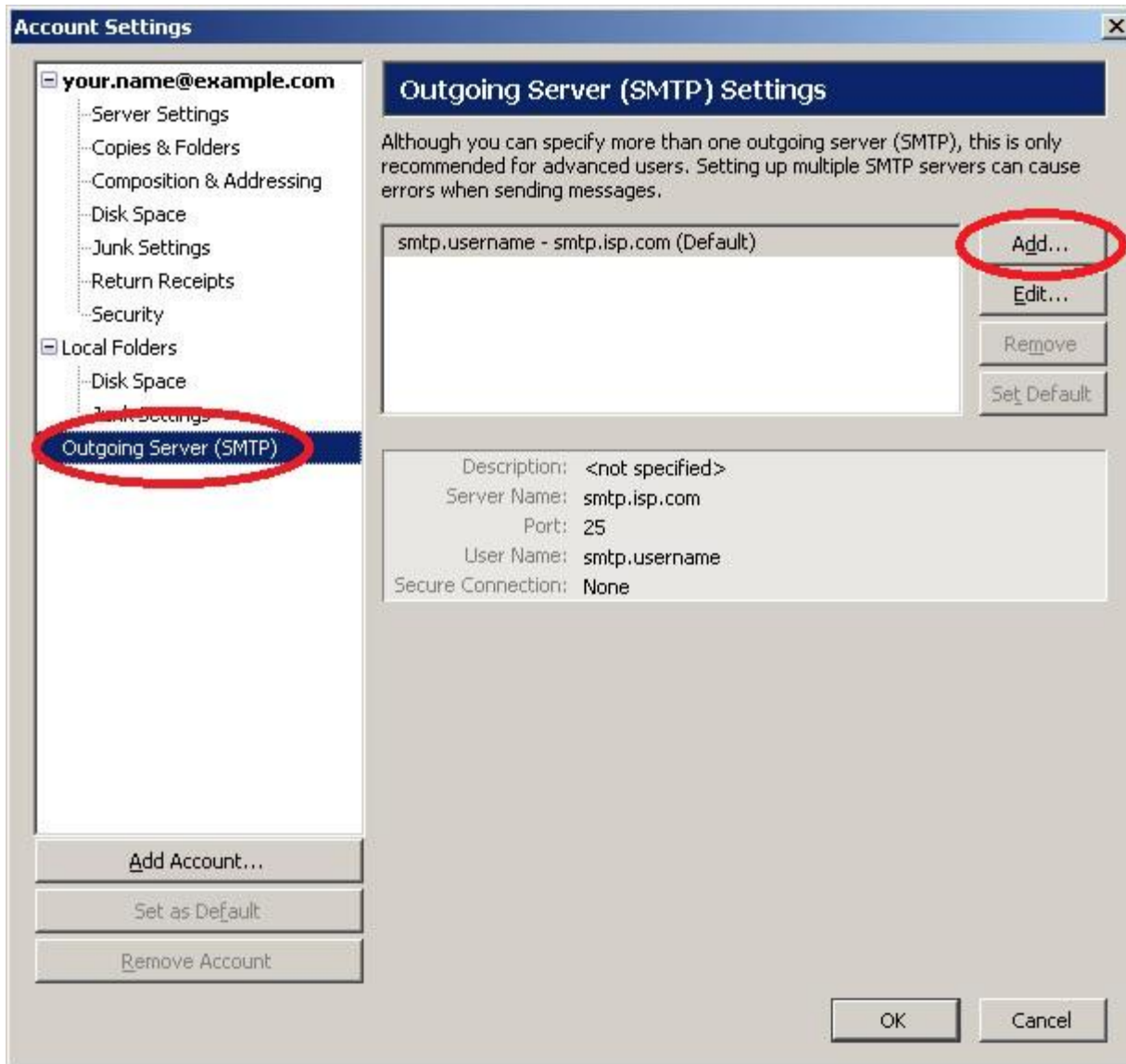
- Very easy to do plus
- They take just a few minutes and a few clicks.

Here are the few, simple steps you should take to change the smtp relay server details for the Mozilla Thunderbird email client.

Step 1 - Open your Thunderbird email software, select Tools and then "Account Settings" from the menu



Step 2 - In the "Account Settings" window, select "Outgoing Server (SMTP)" in the drop-down list, then click "Add..." button



Step 3 - In the SMTP Server window

For the Description enter "**Gamma SMTP server**"

For the Server Name enter "**smtprelay.business-access.co.uk**"

The image shows a screenshot of the "SMTP Server" configuration dialog box. The dialog is titled "SMTP Server" and has a close button in the top right corner. It is divided into two main sections: "Settings" and "Security and Authentication".

Settings Section:

- Description:** Gamma SMTP Server
- Server Name:** smtprelay.business-access.co.uk
- Port:** 25 (Default: 25)

Security and Authentication Section:

- Use name and password
- User Name:** (empty text box)
- Use secure authentication
- Connection security:** None (dropdown menu)

At the bottom of the dialog are two buttons: "OK" and "Cancel".

Step 4 - Click "OK" to close the "SMTP Server window and return to the "Account Settings" window

Check that the settings for the Gamma SMTP Server are now displayed.

Click "OK" to close the "Account Settings" window

You have now completed the set up for the Gamma SMTP relay.

